

THREE-WAY VALVES

The valves are designed to be installed on air tubes connecting pneumatic actuators of safety valves type SiZ 2507 with control unit type USB. Their task is:

- when safety valve is fully closed, to isolate control unit and shut off the pressure from actuator „over piston space” or „under piston space” at the same time;
- when safety valve is fully open, to guarantee good mating of control unit with safety valve's pneumatic actuator.

Operating data

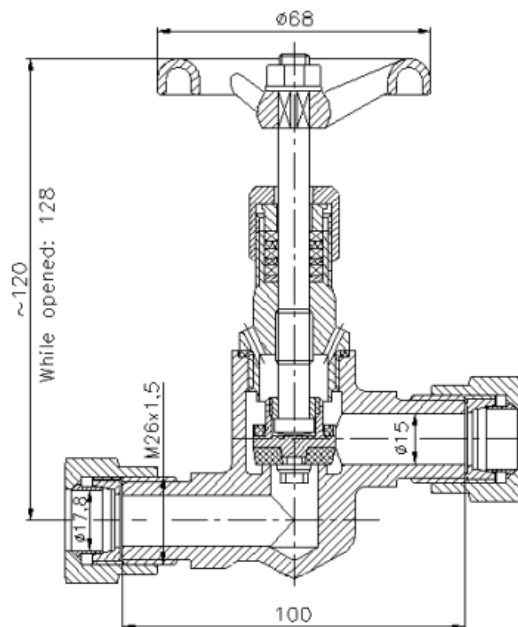
Operating medium	air
Maximum permissible operating pressure	PS = 6 bar
Maximum permissible operating temperature	TS = 100 °C

Materials

Body	brass
Stem	oilproof rubber
Seat sealing	brass

Dimensions

Weight = 1,1 kg



Additional information

Product meets requirements of Directive PED: 2014/68/EU.

End connections: butt-welded ends.

Acceptance tests: EN 12266-1, WTWiO Nr 015.07.1.

We reserve the right to change contents and form of this sheet without notice

rev. 01/2020