

## SWING CHECK VALVES DN80 - DN300 with butt weld ends up to 630 bar

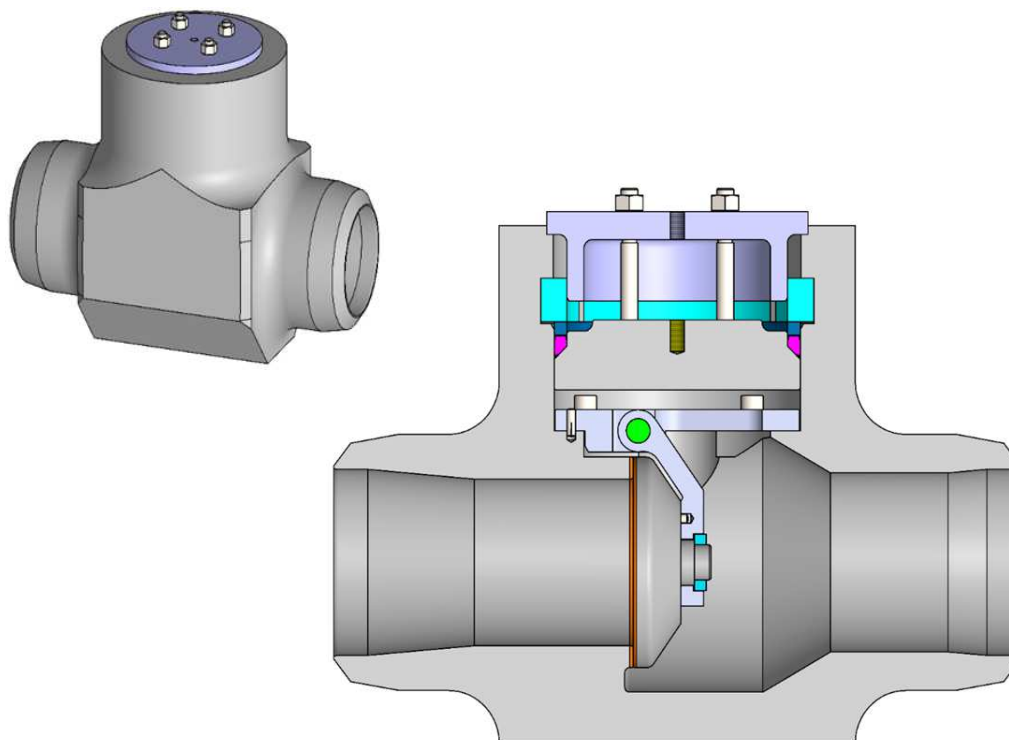
The swing check valves are designed for application in piping installations. They are manufactured in following versions :

- forged steel - type **ZKT4**
- cast steel – type **ZKT5**

Depending on operating data type **ZKT4** is manufactured in following versions:

- version C - light
- version B – medium
- version A – heavy

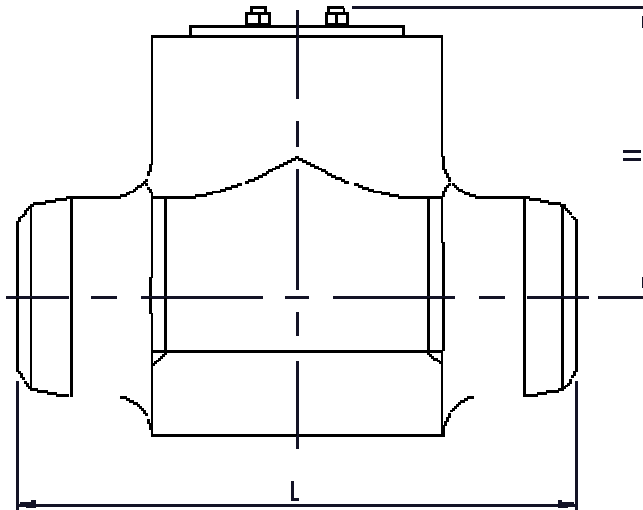
The valves can be mounted on horizontal pipings with bonnet directed up or on vertical pipings when medium flows up, under the disc.



### Materials

Part name	Material
Body (forged version)	P250GH, 16Mo3, 13CrMo4-5, 10CrMo9-10, X10CrMoVNb9-1, 14MoV6-3
Body (cast version)	GP250GH, G17CrMo5-5
Cover	P250GH, 16Mo3, 13CrMo4-5, 11CrMo9-10, X10CrMoVNb9-1, 14MoV6-3
Disc	P250GH, 16Mo3, 13CrMo4-5, 11CrMo9-10, X10CrMoVNb9-1, 14MoV6-3
Sealing surfaces	stainless steel (18%Cr )
Gasket	reinforced graphite

## Dimensions



Forged version							
DN	80	100	125	150	200	250	300
Version C							
L	300	350	400	450	660	710	720
H	150	180	210	230	290	320	470
Version B							
L	300	350	400	450	660	710	720
H	150	180	210	230	290	320	470
Version A							
L	300	400	450	500	650	720	800
H	140	206	230	260	335	390	520

Cast version							
DN	80	100	125	150	200	250	300
L	450	520	600	700	800	900	1050
H	250	250	250	340	360	490	490

### Dimensions of end connections:

- Buttwelding ends in acc. EN 12627

**Pressure – temperature rating - see table 2.**

### Additional information

Product meets requirements of Directive PED: 2014/68/EU.

Acceptance tests : EN 12266-1, leak tightness class C,  
leak tightness class B on request.